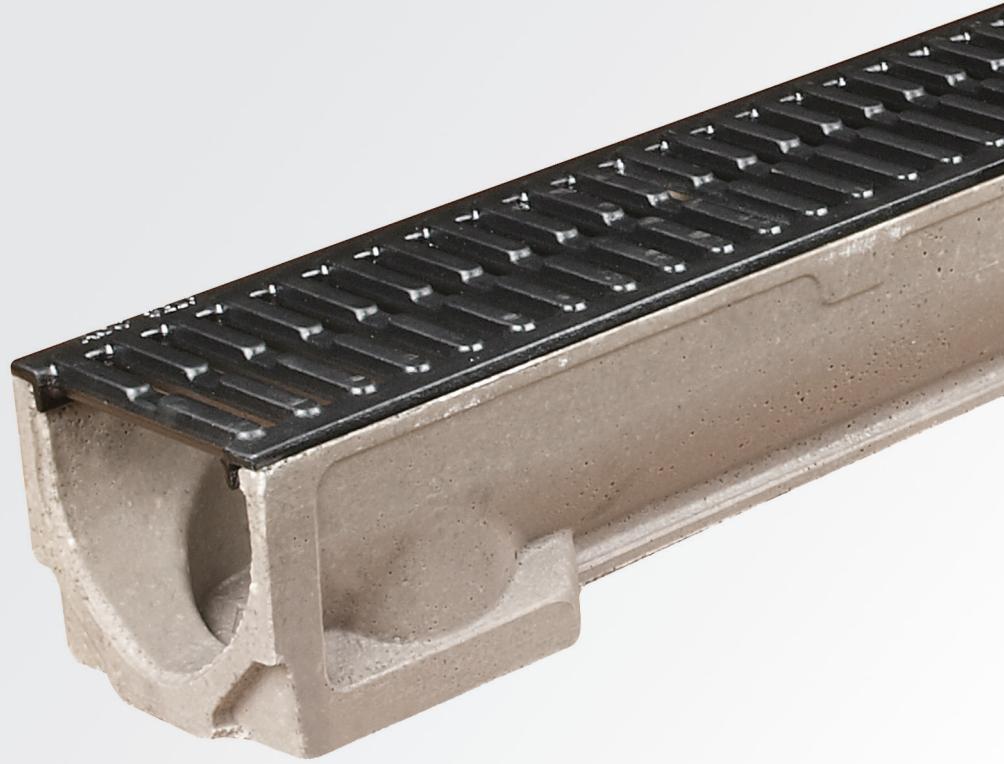


Uniclass L7315	EPIC J3413
Cl/SfB (52.5)	

ACO Water Management: Urban + Landscape

ACO RainDrain® B 125

- ✓ Ideal for driveways and small private car parks
- ✓ Easy and quick to install
- ✓ Clip locking grating for secure installation
- ✓ Channel design improves flow velocity, promotes self cleansing
- ✓ Manufactured from Vienite® - ACO's high strength sustainable polymer concrete
- ✓ Full range of accessories for a professional installation
- ✓ CE marked and fully certified to Load Class B 125 BS EN 1433:2002



ACO RainDrain® B 125

High quality, high strength, polymer concrete light duty drainage channel with cast iron grating

ACO RainDrain® B 125 provides a drainage system for driveways and small private car parks.

Manufactured from Vienite®, ACO's high strength recycled polymer concrete material, the ACO RainDrain® B 125 is designed to provide surface water drainage for driveways and small private car parks. Its lightweight 1m channel design makes it quick and easy to install.

ACO RainDrain® B 125 has a full set of accessories to provide a variety of quick and professional installations.

Typical applications

- ▶ Driveways
- ▶ Small private car parks



ACO RainDrain® B 125

System Overview



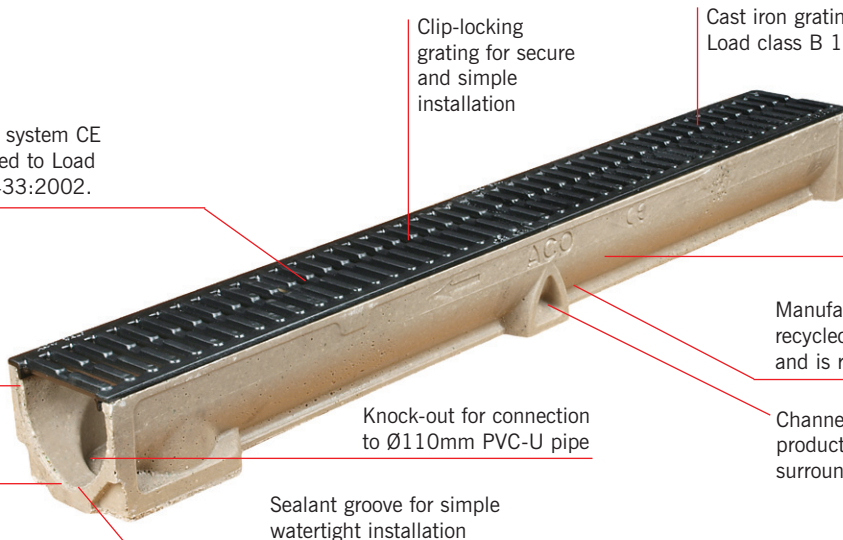
Driveways and small private car parks

Features

Improved performance, system CE marked and fully certified to Load Class B 125 BS EN 1433:2002.

Channels interlock for quick and simple on-site fabrication

Profile improves speed of water and promotes self cleansing



Clip-locking grating for secure and simple installation

Cast iron grating for Load class B 125

Lightweight design for easy handling and installation

Manufactured from recycled materials and is recyclable



Channel shape anchors product into concrete surround

Knock-out for connection to Ø110mm PVC-U pipe

Sealant groove for simple watertight installation

ACO RAINDRAIN B 125 ACCESSORIES



ACO RainDrain® B 125 channel assembly

Product code	Description	Length (mm)	Width (mm)	Depth (mm)	Invert (mm)	Weight (kg)
47001	Channel with cast iron grating 1m	1000	118	97	87	10.97

ACO RainDrain® B 125 options and accessories

Product code	Description	Length (mm)	Width (mm)	Depth (mm)	Invert (mm)	Weight (kg)
38512	Cast iron grating 500mm B 125	500	118	15	-	2.33
38708	Sump with cast iron grating c/w slit bucket	500	118	303	275	13.20
319288	Closing end cap	6	129	97	-	0.03
319289	Outlet end cap	-	129	135	-	0.07
01684	Horizontal foul air trap	100	Ø110	-	-	0.2
0056	820 Drain union PVC-U 1100mm	100	Ø110	-	-	0.1
1367	Lifting tools 5mm slots	-	-	-	-	0.2

ACO RAINDRAIN B 125 INSTALLATION



Dig trench 318mm wide (218mm wide if against a structure) by 200mm deep for channel (400mm deep for sump). Mark finishing height with fixed line 3mm below final surface. Lay 100mm (min.) bed of concrete.



Knock out pre-formed outlet from the inside (marked with hammer symbol) or fit sump or outlet endcap. Position sump or outlet channel on concrete bed, fit PVC-U union/trap to drainage pipework.



Lay channels starting from outlet/sump, ensuring joints connect by lowering units horizontally. Fit endcap to end channel. For fully watertight joints, use a suitable sealant (contact ACO for further advice).



With gratings fitted, haunch around channels/sumps with concrete (suitable fill material). Final surface to be 3mm above grating. Bricks/paviours should be laid in mortar for lateral stability.